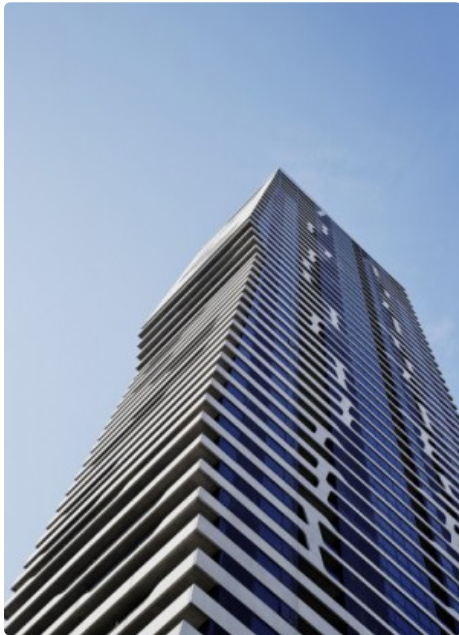


MY80



Click an image to view larger version.



Figures

Height: Architectural	173 m / 568 ft
Height: Occupied	161 m / 528 ft
Height: To Tip	173 m / 568 ft
Floors Above Ground	55
Floors Below Ground	1
# of Elevators	7
Top Elevator Speed	6 m/s
Tower GFA	44,305 m ² / 476,895 ft ²
Development GFA	44,305 m ² / 476,895 ft ²
# of Apartments	487
# of Parking Spaces	135

Facts

Official Name	MY80
Other Names	410 Elizabeth Street
Structure Type	Building
Status	COM
Country	Australia
City	Melbourne
Street Address & Map	410 Elizabeth Street
Postal Code	3000
Building Function	residential
Structural Material	concrete
Proposed	2009
Construction Start	2012
Completion	2014
Official Website	My80

Companies Involved

Owner/Developer	Mammoth Empire Holding Sdn Bhd
Architect	Hayball
• Design	Hayball
Structural Engineer	Webber Design
• Design	Webber Design
MEP Engineer	ALA Consulting Engineers
• Design	ALA Consulting Engineers
Project Manager	PDS Group
Main Contractor	Probuild
Other Consultant	
• Acoustics	Acoustic Logic Consultancy PTY LTD
• Fire	Thomas Nicolas
Material Supplier	
• Cladding	Custom Facades
• Concrete	Concrete Precast Systems

To submit more information or donate images for this project, please use our [submission portal](#).