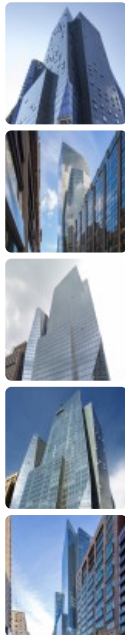


Prism Tower

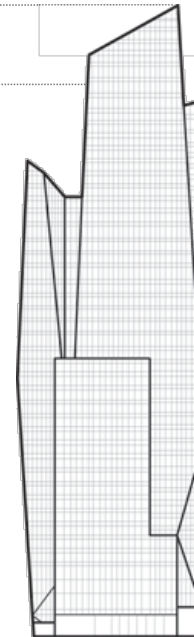


© Wade Zimmerman via CTBUH

Click an image to view larger version.



Height: To Tip
145 m / 476 ft
Height:
Architectural
145 m / 476 ft
Height: Occupied
126.4 m / 415 ft



Floors Above Ground
42
Floors Below Ground
2
Tower GFA
44,130 m² / 475,011 ft²
of Apartments
363

Facts

Official Name	Prism Tower
Other Names	400 Park Avenue South
Structure Type	Building
Status	COM
Country	United States
City	New York City
Street Address & Map	50 East 28th Street
Postal Code	10016
Building Function	residential
Structural Material	concrete
Construction Start	2012
Completion	2015
Official Website	400 Park Avenue South

Companies Involved

Owner/Developer	Toll Brothers; Equity Residential
Architect	Atelier Christian de Portzamparc
• Design	Atelier Christian de Portzamparc
• Architect of Record	Handel Architects LLP
Structural Engineer	DeSimone Consulting Engineers
• Engineer of Record	DeSimone Consulting Engineers
MEP Engineer	Cosentini Associates
• Engineer of Record	Cosentini Associates
Main Contractor	Lend Lease
Other Consultant	
• Building Monitoring	Vidaris, Inc.
• Civil	Langan Engineering
• Energy Concept	Vidaris, Inc.
• Environmental	Langan Engineering
• Façade	Vidaris, Inc.
• Geotechnical	Langan Engineering
• Roofing	Vidaris, Inc.
• Wind	Cermak Peterka Petersen (CPP), Inc.

About Prism Tower

400 Park Avenue South is an angular 40-story building at the corner of Park Avenue South and East 28th Street. It is nicknamed "Sky Couture" and will be split between condominiums above and apartments below. 400 Park Avenue South is designed by Pritzker Prize-winning architect Christian de Portzamparc and features a 27th floor sky lounge available for condo residents.

CTBUH Initiatives

400 Park Avenue South Residential Tour

28 Oct 2015 – Tour Report

To submit more information or donate images for this project, please use our [submission portal](#).