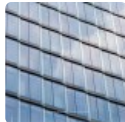


## Shanghai Arch



Click an image to view larger version.



### Figures

Height: Architectural	143.7 m / 471 ft
Height: Occupied	130.5 m / 428 ft
Height: To Tip	143.7 m / 471 ft
Floors Above Ground	29
Floors Below Ground	4
# of Elevators	18
Top Elevator Speed	5 m/s
Tower GFA	142,880 m <sup>2</sup> / 1,537,948 ft <sup>2</sup>
Development GFA	262,476 m <sup>2</sup> / 2,825,268 ft <sup>2</sup>
# of Parking Spaces	1,383

### Facts

Official Name	Shanghai Arch
Other Names	Jin Hongqiao International Center - Phase I
Structure Type	Building
Status	COM
Country	China
City	Shanghai
Street Address & Map	No. 533 Loushanguan Road, Chang Ning District
Postal Code	200231
Building Function	office
Structural Material	concrete
Proposed	2006
Construction Start	2008
Completion	2014
Official Website	<a href="http://Shanghai Arch">Shanghai Arch</a>

### Companies Involved

Owner/Developer	Shanghai Jin Hong Qiao International Property Co. Ltd
Architect	<ul style="list-style-type: none"> <li>Design: <a href="#">John Portman &amp; Associates</a></li> <li>Architect of Record: <a href="#">East China Architectural Design &amp; Research Institute</a></li> </ul>
Structural Engineer	<ul style="list-style-type: none"> <li>Design: <a href="#">John Portman &amp; Associates</a></li> <li>Engineer of Record: <a href="#">East China Architectural Design &amp; Research Institute</a></li> </ul>
MEP Engineer	<ul style="list-style-type: none"> <li>Design: <a href="#">Newcomb &amp; Boyd</a></li> <li>Engineer of Record: <a href="#">East China Architectural Design &amp; Research Institute</a></li> </ul>
Main Contractor	<a href="#">Shanghai No. 7 Construction Co., Ltd</a>
Other Consultant	<ul style="list-style-type: none"> <li>Façade: <a href="#">ALT Limited</a></li> <li>Landscape: <a href="#">Arnold Associates</a></li> <li>Vertical Transportation: <a href="#">Fortune Consultants, Ltd.</a></li> </ul>
Material Supplier	<ul style="list-style-type: none"> <li>Elevator: <a href="#">Schindler</a></li> </ul>

### About Shanghai Arch

The site for the Jin Hongqiao International Center, ideally suited as a gateway to this dynamic area, gave birth to the "portal" design of the Shanghai Arch. This signature office building is the first of three components that make up the Jin Hongqiao International Center. The office tower acts as a portal into the other project components, as well as the entire Hongqiao Expansion Business Zone.

Rising up as two separate towers, it is joined at the 23rd floor by a seven-story sky bridge that creates a dynamic "gate" into the pedestrian-friendly retail promenade. The east wall is curved with overlapped glass, to create a "fish scale" appearance. The "drapery" effect of the building is strengthened by the extended glass fins beyond the building massing on the east and west elevations. The glazing at street level blurs the line between indoors and outside, complemented by the flow of the plaza landscaping and water features that "pass through" the office building.

### CTBUH Initiatives

## Shanghai Arch Technical Tour Report

19 Sep 2014 – Tour Report

To submit more information or donate images for this project, please use our [submission portal](#).