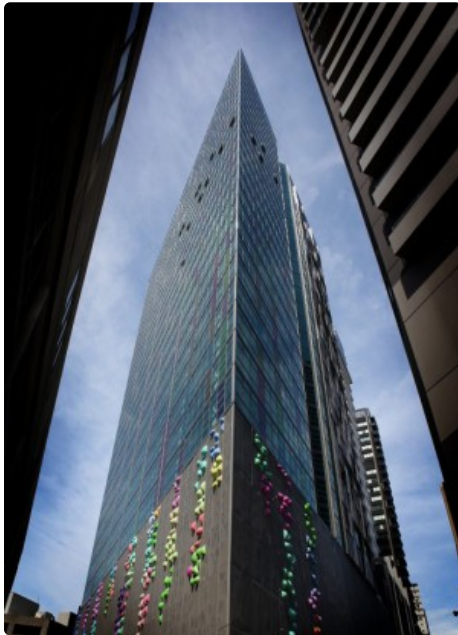


This PDF was downloaded from The Skyscraper Center on 2020/05/29 UTC  
For the most up to date version, please visit <https://skyscrapercenter.com>

## Triptych Apartments



Click an image to view larger version.

### Facts

Official Name	Triptych Apartments
Structure Type	Building
Status	COM
Country	Australia
City	Melbourne
Street Address & Map	<a href="#">8 Kavanagh Street, Southbank</a>
Building Function	residential
Structural Material	concrete
Completion	2010
Official Website	<a href="#">Triptych</a>

### Figures

Height: Architectural	95 m / 312 ft
Floors Above Ground	30
# of Elevators	3
# of Apartments	157

### Companies Involved

Developer	The Stable Group; RI Real Estate Funds Management
Architect	Nettleton Tribe
• Design	
Structural Engineer	Robert Bird Group
• Design	
MEP Engineer	Medland Metropolis; Cundall
• Design	
Project Manager	Clifton Property Group
Other Consultant	
• Access	Davis Langdon
• Acoustics	Marshall Day Acoustics
• Artist	Robert Owen
• Code	Philip Chun & Associates
• Fire	Lake Young & Associates
• Interiors	Carr Design Group; Geyer Pty Ltd
• Land Surveyor	Hellier McFarland
• Landscape	JPD MEDIA + DESIGN; Patio
• Property Management	Clifton Property Group
• Quantity Surveyor	Napier & Blakeley
• Traffic	Cardno Grogan Richards
• Urban Planner	Fulcrum Urban Planning

To submit more information or donate images for this project, please use our [submission portal](#).