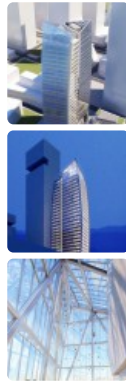


## Minmetals Financial Center

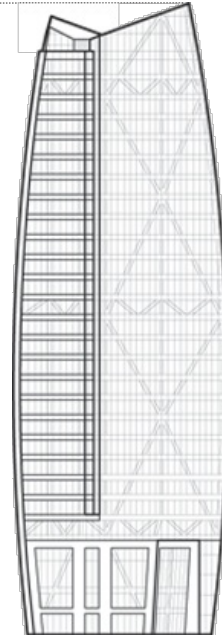


Click an image to view larger version.



Height: To Tip  
145 m / 476 ft

Height:  
Architectural  
145 m / 476 ft



Floors Above Ground  
29

Floors Below Ground  
5

Tower GFA  
38,000 m<sup>2</sup> / 409,029 ft<sup>2</sup>

### Facts

Official Name	Minmetals Financial Center
Other Names	Minmetals Capital South China Tower
Structure Type	Building
Status	UCT
Country	China
City	Shenzhen
Street Address & Map	Houhaibin Road, Nanshan District
Building Function	office
Energy Label	LEED Gold
Proposed	2014
Construction Start	2015
Completion	2019

### Companies Involved

Developer	Minmetals Capital
Architect	
• Design	Pei Cobb Freed & Partners
• Architect of Record	Huayi Design Consultants Ltd; Mo Atelier Szeto
Structural Engineer	
• Design	Leslie E. Robertson Associates
MEP Engineer	
• Design	SYSKA Hennessy Group

### About Minmetals Financial Center

Located in the Nanshan District on Shenzhen's west side, Minmetals Financial Center is designed as a corporate headquarters positioned alongside busy Binhai Avenue, a major artery through the heart of the city. The building addresses this prominent location through the use of a bowed façade inspired by a sail blowing in the wind. The arched facades are then glazed entirely with glass, intentionally contrasting with a stone base flanking the entrances to the tall lobbies on either side of the tower.

Responding to the context of having an interchange of two high-speed roadways right outside the building, the tower takes on a slender form while much of the site is left as a landscaped open space with water features and public art acting as a buffer to pedestrians from the nearby traffic. This open space then flows into the street fronting entrance for the tower positioned within a tall arcade framed by a large column supporting the northeast corner of the structure above.

The tower is framed with large X braces, each running through 12 floors and supplemented by additional belt trusses. The one story high belt trusses then wrap around slender tower at three different points in the building, including just above the lobby, the midpoint of the tower where the X braces join together and at the top of the building, just below the crown. The framework of the structure divides the building into two 12 story blocks of office space vertically stacked upon each other and set between the multi-story lobby and the crown of the building which is created through an extension of the bowed façade beyond the main roofline. In the evening hours, the curved façade's transparent glass then reveals the structural configuration of the tower as the braces become visible to the outside world.

### Videos

#### CTBUH Video Interview – SawTeen See

17 Oct 2016 – SawTeen See, Leslie E. Robertson Associates

### Research Papers

#### Structural Design Challenges of Minmetals Capital Tower, Shenzhen

17 Oct 2016 – Cities to Megacities: Shaping Dense Vertical Urbanism

**Structural Design Challenges of Minmetals Capital Tower,  
Shenzhen**

17 Oct 2016 – SawTeen See, Leslie E. Robertson Associates

To submit more information or donate images for this project, please use our [submission portal](#).