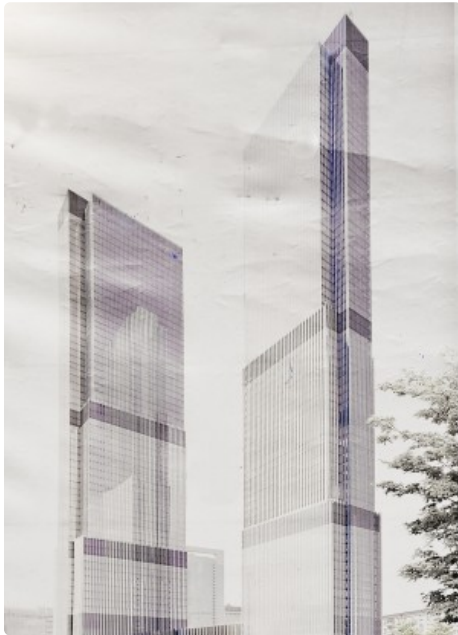


This PDF was downloaded from The Skyscraper Center on 2020/04/02 UTC  
For the most up to date version, please visit <https://skyscrapercenter.com>

## NEVA TOWERS 2



Click an image to view larger version.

### Figures

Height: Architectural	345 m / 1,132 ft
Height: To Tip	345 m / 1,132 ft
Floors Above Ground	79
Floors Below Ground	4
Top Elevator Speed	8 m/s
# of Apartments	814
# of Parking Spaces	2,040

### Facts

Official Name	NEVA TOWERS 2
Name of Complex	NEVA TOWERS
Other Names	Renaissance Towers 2
Structure Type	Building
Status	COM
Country	Russia
City	Moscow
Street Address & Map	<a href="#">Perviy Krasnogvardeiskii Lane</a>
Postal Code	123317
Building Function	residential
Structural Material	concrete
Proposed	2006
Construction Start	2013
Completion	2020
Official Website	<a href="#">NEVA TOWERS</a>

### Companies Involved

Developer	<a href="#">Renaissance Development</a>
Architect	<ul style="list-style-type: none"><li>• <a href="#">Design</a> <a href="#">FXFWOLE</a>; <a href="#">SPEECH</a>; <a href="#">HOK, Inc.</a></li></ul>
Structural Engineer	<ul style="list-style-type: none"><li>• <a href="#">Design</a> <a href="#">Halvorson and Partners</a></li></ul>
MEP Engineer	<ul style="list-style-type: none"><li>• <a href="#">Design</a> <a href="#">Metropolis</a></li></ul>
Main Contractor	<a href="#">Renaissance Construction Company</a>
Material Supplier	<ul style="list-style-type: none"><li>• <a href="#">Cladding</a> <a href="#">Metal Yapi</a></li><li>• <a href="#">Elevator</a> <a href="#">KONE</a></li><li>• <a href="#">Sealants</a> <a href="#">Sika Services AG</a></li></ul>

### Research Papers

[Plot 17-18 Project: Tall Building Design in "Moscow City"](#)  
17 Oct 2016 – Cities to Megacities: Shaping Dense Vertical Urbanism

To submit more information or donate images for this project, please use our [submission portal](#).