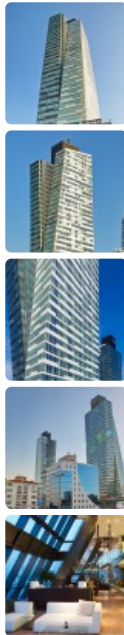


Trump Tower 1



Click an image to view larger version.



Height: Occupied
145.1 m / 476 ft

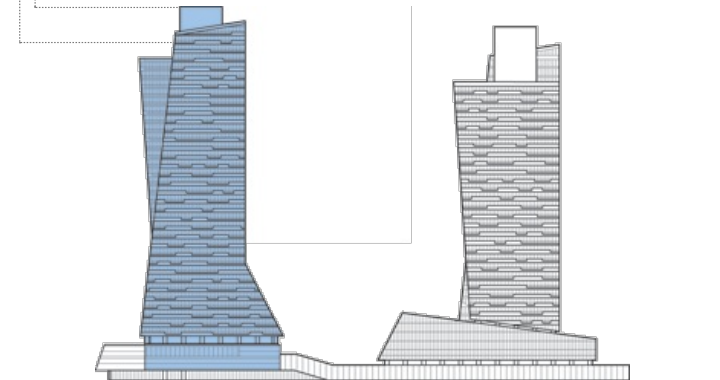
Height: To Tip
160.9 m / 528 ft

Height: Architectural
156.3 m / 513 ft

Floors Above Ground
39

Floors Below Ground
12

of Apartments
201



Facts

Official Name	Trump Tower 1
Name of Complex	Trump Towers Istanbul
Other Names	Trump Towers Istanbul Sisli Residential, Mecidiyekoy Residence
Structure Type	Building
Status	COM
Country	Turkey
City	Istanbul
Street Address & Map	Sehit Ahmet St. No. 1
Postal Code	34387
Building Function	residential
Structural Material	concrete
Proposed	2005
Construction Start	2007
Completion	2011
Official Website	Trump Tower Towers Istanbul

Companies Involved

Owner	Ortadogu Otomotiv TIC. AS.
Developer	Ortadogu Otomotiv TIC. AS.; The Trump Organization
Architect	Brigitte Weber Architects
• Design	Chapman Taylor
• Architect of Record	
Structural Engineer	Altineller Muhendislik Ve Taadhut
• Design	
MEP Engineer	Birikim Muhendislik
• Design	
Main Contractor	Tasyapi Insaat Taahhüt Sanayi ve Ticaret A.S.

About Trump Tower 1

Trump Towers Istanbul is a mixed-use development, bringing an office and a residential tower together on a large, shared podium which houses a major shopping center, and serves as a terminus for intercity bus lines. The ascending and descending form differentiates the floor plans from one another across the height of the two towers. Therefore, rather than a single character to each unit, there is variance.

The two towers have a compact design that maximizes the space as much as possible. The architecture and interior design were carried out together to harmonize the space and ensure efficiency, while eliminating wasted floor area within the narrow plans. The ratio of transparent and opaque surfaces on the façade was carefully considered to achieve an optimal balance in terms of both natural lighting and solar gain. Rather than having a central system which heats or cools every volume at a fixed amount, each unit has its own control, so that tenants can control their own internal environment.

To submit more information or donate images for this project, please use our [submission portal](#).