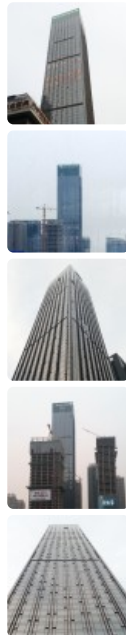
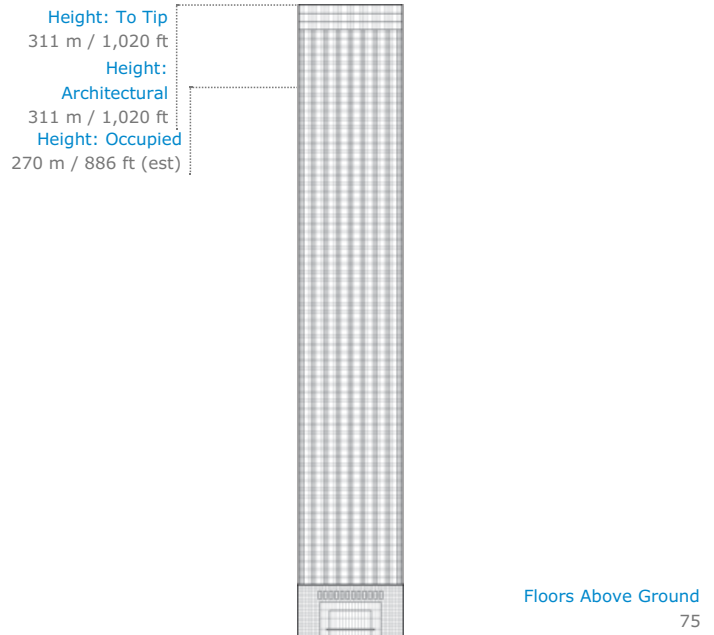


Moi Center Tower A



Click an image to view larger version.



Facts

Official Name	Moi Center Tower A
Name of Complex	Shenyang Moi Center
Other Names	Shenyang Maoye City 1, Moi City 1
Structure Type	Building
Status	COM
Country	China
City	Shenyang
Street Address & Map	Qingnian Street
Building Function	hotel / office
Structural Material	composite <ul style="list-style-type: none"> Core: Reinforced Concrete Columns: Concrete Encased Steel Floor Spanning: Steel
Construction Start	2008
Completion	2014

Companies Involved

Architect	
• Design	Shenzhen Tongji Architects
Structural Engineer	
• Design	Shenzhen Tongji Architects
Main Contractor	Shanghai Construction Group

About Moi Center Tower A

When completed in 2014, the Moi Center Tower A was the first supertall building to emerge from the rapidly changing skyline of Shenyang. Comprised of hotel and offices uses, Moi Center Tower A rises as the tallest of a trio of towers which are bound together by a shared retail podium aligned to Qingnian Street, a major thoroughfare through the heart of the city.

The Moi Center Tower A was constructed of a composite frame with a reinforced concrete core and a perimeter of cylindrical steel columns, while the remainder of the complex, including the shared podium, was built of only reinforced concrete. The steel framing allows for an open column-free span between the core and the perimeter, ideal for office uses within the tower, and is typical for framing of other such Chinese supertall towers constructed in this era. The tower is offset from the podium and is rectilinear in form, maintaining the same dimensions as it rises from the ground level to the very top while presenting its full height as a single vertical wall to the sidewalk, uninterrupted by setbacks. The exterior is sheathed in a glass curtain wall façade with distinct vertical lines not only visually accentuating the height of the tower, but also expressing the perimeter column grid onto the tower's cladding.

While the tower itself created a new peak in the skyline upon initial completion, it was quickly joined by other supertall buildings constructed in the center of the Shenyang, with almost all of which are aligned to the same north-south Qingnian Street corridor.

CTBUH Initiatives

[CTBUH Releases Year in Review: Tall Trends of 2014](#)
Dec 2014 – CTBUH Journal Paper

Research Papers

[Year in Review: Tall Trends of 2014](#)
Dec 2014 – CTBUH Journal, 2015 Issue I

To submit more information or donate images for this project, please use our [submission portal](#).