

Suning Plaza Tower 1

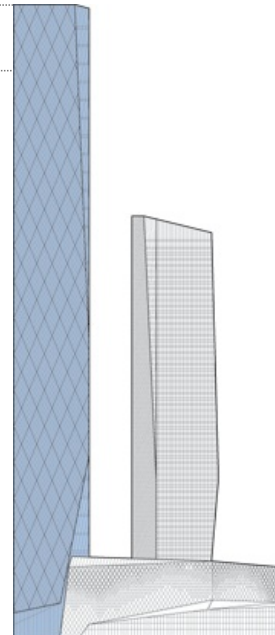


Click an image to view larger version.



Height: To Tip
338 m / 1,109 ft

Height:
Architectural
338 m / 1,109 ft
Height: Occupied
301.8 m / 990 ft



Floors Above Ground
75
Floors Below Ground
4
of Hotel Rooms
318

Facts

| | |
|----------------------|--|
| Official Name | Suning Plaza Tower 1 |
| Name of Complex | Suning Plaza |
| Other Names | Hyatt Regency Zhenjiang, Suning Plaza East Tower |
| Structure Type | Building |
| Status | COM |
| Country | China |
| City | Zhenjiang |
| Street Address & Map | Zhongshan East Road |
| Building Function | hotel / serviced apartments / SOHO / office |
| Structural Material | composite <ul style="list-style-type: none"> Core: Reinforced Concrete Columns: Concrete Filled Steel Floor Spanning: Steel |

| | |
|--------------------|------|
| Construction Start | 2012 |
| Completion | 2018 |

Rankings

| | |
|------------------|--|
| Global Ranking | #76 Tallest in the World |
| Regional Ranking | #46 Tallest in Asia |
| National Ranking | #38 Tallest in China |
| City Ranking | #1 Tallest in Zhenjiang |

Click arrows to view the next taller/shorter buildings



Companies Involved

| | |
|---------------------|--|
| Developer | Suning Real Estate Group |
| Architect | <ul style="list-style-type: none"> Design: RMJM; Architectural Design Institute of Jiangsu Province |
| Structural Engineer | <ul style="list-style-type: none"> Design: Magnusson Klemencic Associates |
| Material Supplier | <ul style="list-style-type: none"> Ceiling: Armstrong World Industries Cladding: Jangho Group Co., Ltd. Elevator: Schindler |

CTBUH Initiatives

[CTBUH Releases Year in Review: Tall Trends of 2018](#)
Dec 2018 – CTBUH News Report

Research Papers

[Year in Review: Tall Trends of 2018](#)
Dec 2018 – CTBUH Journal 2019 Issue I

To submit more information or donate images for this project, please use our [submission portal](#).