

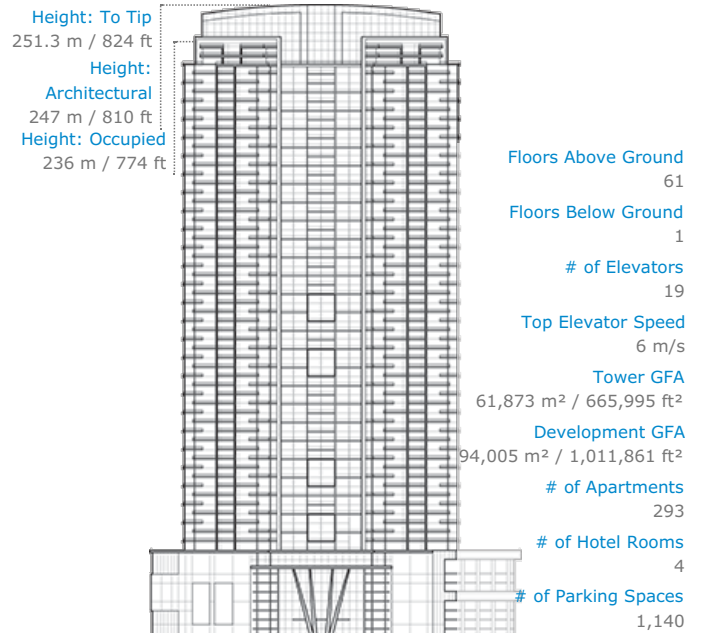
## One Avighna Park



© Avighna India Ltd. via CTBUH



Click an image to view larger version.



### Facts

Official Name	One Avighna Park
Structure Type	Building
Status	COM
Country	India
City	Mumbai
Street Address & Map	Mahadev Palav Road
Postal Code	400012
Building Function	residential
Structural Material	concrete
Energy Label	Indian Green Building Council (IGBC) Pre-certified
Proposed	2010
Construction Start	2010
Completion	2017
Official Website	<a href="#">One Avighna Park</a>

### Companies Involved

Owner/Developer	Nish Developers Pvt Ltd.
Architect	Neo Modern Architects Pvt. Ltd.
• Design	
Structural Engineer	Mahimtura Consultants Pvt. Ltd.
• Design	
MEP Engineer	Elemec UAE
• Design	
Main Contractor	Simplex Infrastructures Ltd.
Other Consultant	
• Interiors	JPA design
• Landscape	Belt Collins & Associates
• Lighting	DHA Designs
• Vertical Transportation	Toshiba Elevator and Building Systems Corporation (TELCO)
• Wind	BMT Fluid Mechanics Ltd.
Material Supplier	
• Aluminium	Schüco
• Concrete	UltraTech Cement Lanka (Pvt.) Ltd.
• Electrical	Schneider Electric
• Elevator	Toshiba Elevator and Building Systems Corporation (TELCO)
• HVAC	Daikin

To submit more information or donate images for this project, please use our [submission portal](#).