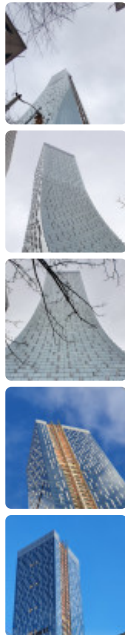


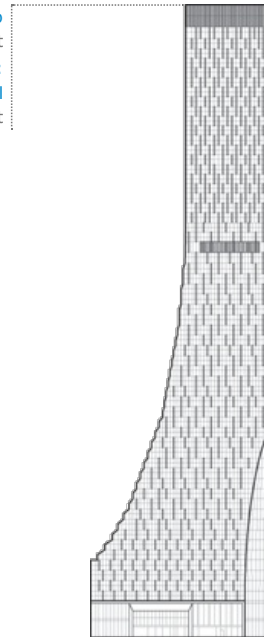
Rainier Square Tower



Click an image to view larger version.



Height: To Tip
259.1 m / 850 ft
Height:
Architectural
259.1 m / 850 ft



Floors Above Ground
58
Tower GFA
107,768 m² / 1,160,005 ft²
of Apartments
188
of Parking Spaces
1,000

Facts

Official Name	Rainier Square Tower
Name of Complex	Rainier Square
Structure Type	Building
Status	UCT
Country	United States
City	Seattle
Street Address & Map	1301 5th Ave
Postal Code	98101
Building Function	residential / office
Structural Material	composite <ul style="list-style-type: none"> Core: Concrete Filled Steel Columns: Concrete Filled Steel Floor Spanning: Steel
Proposed	2014
Construction Start	2017
Completion	2020

Companies Involved

Owner	University of Washington; Wright Runstad & Company
Developer	Wright Runstad & Company
Architect	<ul style="list-style-type: none"> Design: NBBJ
Structural Engineer	<ul style="list-style-type: none"> Design: Magnusson Klemencic Associates
Main Contractor	Lease Crutcher Lewis, LLC
Other Consultant	<ul style="list-style-type: none"> Landscape: Gustafson, Guthrie, & Nichol
Material Supplier	<ul style="list-style-type: none"> Crane: Morrow Equipment Company Steel: ArcelorMittal; Supreme Group

CTBUH Initiatives

Seattle Regional Tour
29-30 Oct 2015 – Tour Report

To submit more information or donate images for this project, please use our [submission portal](#).