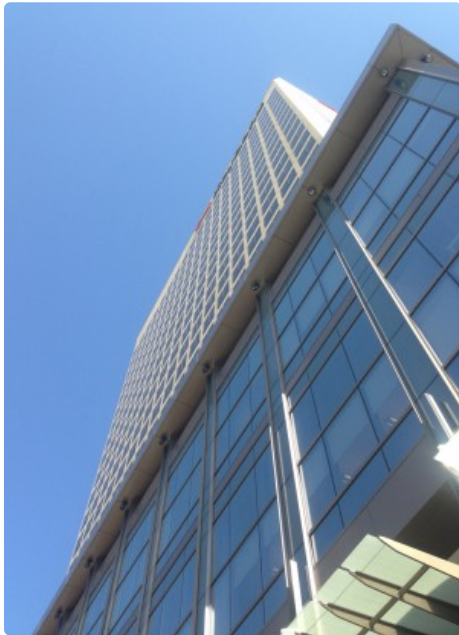


This PDF was downloaded from The Skyscraper Center on 2020/01/19 UTC
For the most up to date version, please visit <https://skyscrapercenter.com>

Key Bank Tower



Click an image to view larger version.



Figures

| | |
|-----------------------|---|
| Height: Architectural | 107 m / 351 ft |
| Floors Above Ground | 27 |
| Tower GFA | 27,500 m ² / 296,008 ft ² |

Facts

| | |
|----------------------|---------------------------------------|
| Official Name | Key Bank Tower |
| Other Names | ZCMI Center, Beneficial Life Building |
| Structure Type | Building |
| Status | Completed |
| Country | United States |
| City | Salt Lake City |
| Street Address & Map | 36 South State Street |
| Postal Code | 84111 |
| Building Function | office |
| Completion | 1976 |

Companies Involved

| | |
|-----------|------------------|
| Architect | |
| • Design | Gruen Associates |

To submit more information or donate images for this project, please use our [submission portal](#).