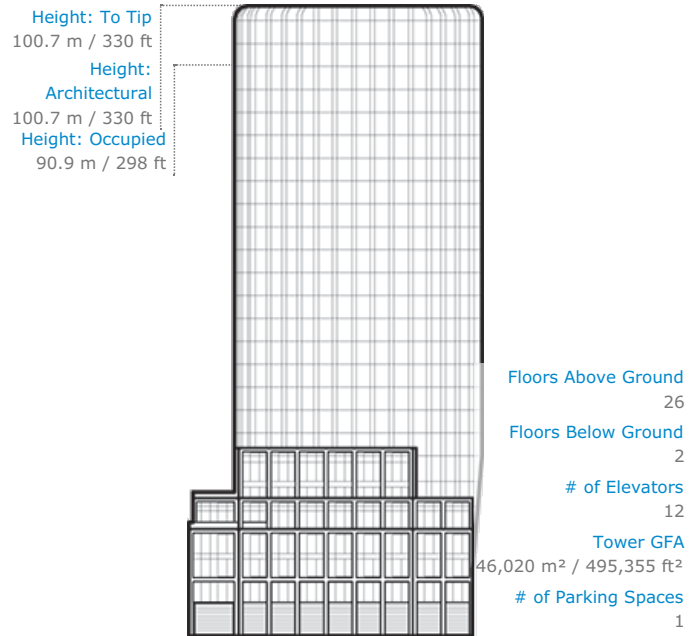


Angel Court

This project is a **renovation** and replaced **Angel Court Tower**



Click an image to view larger version.



Facts

Official Name	Angel Court
Structure Type	Building
Status	COM
Country	United Kingdom
City	London
Street Address & Map	One Angel Court
Postal Code	EC 2R7JH
Building Function	office
Structural Material	composite
Energy Label	BREEAM 'Excellent'
Construction Start	2013
Completion	2017

Companies Involved

Owner/Developer	Mitsui Fudosan Co. Ltd.; Stanhope
Architect	<ul style="list-style-type: none"> Design Fletcher Priest Architects
Structural Engineer	<ul style="list-style-type: none"> Design Waterman Group
MEP Engineer	<ul style="list-style-type: none"> Design Waterman Building Services Ltd
Main Contractor	Mace Limited
Other Consultant	<ul style="list-style-type: none"> Access David Bonnett Associates Code MLM Façade Maintenance REEF Associates Ltd Landscape Vogt Landschaft GmbH Lighting EQ2 Planning DP9 Ltd Traffic Arup
Material Supplier	<ul style="list-style-type: none"> Cladding Focchi S.p.A. Elevator Mitsubishi Elevator and Escalator Fire Hilti AG Proofing Kingspan Flooring British Gypsum Partition Steel Severfield

Videos

A Contemporary Conversion Gives an Old Tower New Life
30 May 2018 – Nick Jarman, Stanhope; Nicholas Worley, Fletcher Priest Architects

CTBUH Awards

Best Tall Building Europe 2018 Award of Excellence
CTBUH Awards 2018

To submit more information or donate images for this project, please use our [submission portal](#).