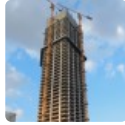
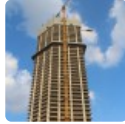
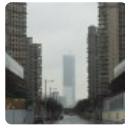


## SK Group Tower



Click an image to view larger version.



### Figures

Height: Architectural	275 m / 902 ft
Height: To Tip	275 m / 902 ft
Floors Above Ground	59
Development GFA	200,345 m <sup>2</sup> / 2,156,496 ft <sup>2</sup>

### Facts

Official Name	SK Group Tower
Structure Type	Building
Status	COM
Country	China
City	Shanghai
Street Address & Map	<a href="#">Yaolong Road</a>
Building Function	office
Structural Material	composite <ul style="list-style-type: none"><li>Core: Reinforced Concrete</li><li>Columns: Concrete Encased Steel</li><li>Floor Spanning: Reinforced Concrete</li></ul>
Proposed	2012
Construction Start	2015
Completion	2019

### Companies Involved

Other Consultant	
• Cost	<a href="#">Rider Levett Bucknall</a>
Material Supplier	
• Ceiling	<a href="#">Armstrong World Industries</a>
• Cladding	<a href="#">Yatai Industrial Group</a>

### CTBUH Initiatives

[CTBUH Releases Year in Review: Tall Trends of 2019](#)  
12 Dec 2019 – CTBUH Journal Paper Report

### Research Papers

[Year in Review: Tall Trends of 2019](#)  
12 Dec 2019 – CTBUH Journal 2020 Issue I

To submit more information or donate images for this project, please use our [submission portal](#).