

# The Skyscraper Center

Global Tall Building Database of the CTBUH



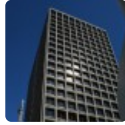
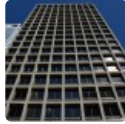
This PDF was downloaded from The Skyscraper Center on 2020/01/20 UTC  
For the most up to date version, please visit <https://skyscrapercenter.com>

## Park Place



© Terri Meyer Boake via CTBUH

Click an image to view larger version.



### Figures

Height: Architectural 83 m / 272 ft  
Floors Above Ground 21

### Facts

Official Name	Park Place
Structure Type	Building
Status	Completed
Country	United States
City	Seattle
Street Address & Map	<a href="#">1200 Sixth Avenue</a>
Postal Code	98101
Building Function	office
Structural Material	steel
Completion	1972

### Companies Involved

Architect  
• [Design](#) [Callison](#)

To submit more information or donate images for this project, please use our [submission portal](#).