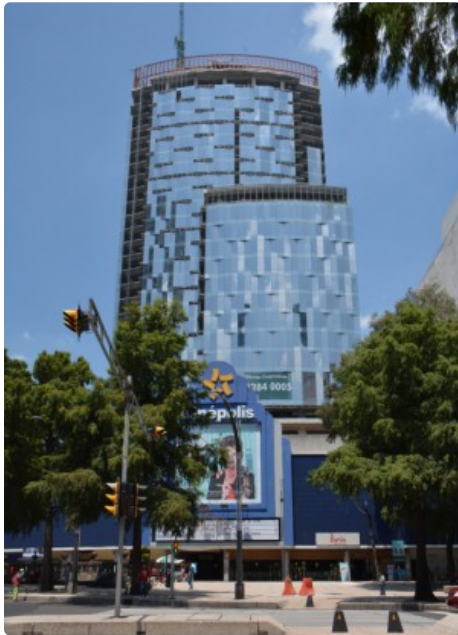


This PDF was downloaded from The Skyscraper Center on 2020/02/28 UTC
For the most up to date version, please visit <https://skyscrapercenter.com>

Torre Diana



Click an image to view larger version.



Figures

Height: Architectural	158.3 m / 519 ft
Height: To Tip	158.3 m / 519 ft
Floors Above Ground	33
Floors Below Ground	7
# of Elevators	22
Tower GFA	138,634 m ² / 1,492,244 ft ²

Facts

Official Name	Torre Diana
Structure Type	Building
Status	COM
Country	Mexico
City	Mexico City
Street Address & Map	Paseo de la Reforma 505
Building Function	office / retail
Structural Material	concrete
Energy Label	Targeting LEED Certified
Construction Start	2013
Completion	2016
Official Website	Torre Diana

Companies Involved

Architect	
• Design	Colonnier y Asociados

To submit more information or donate images for this project, please use our [submission portal](#).