

The Skyscraper Center

Global Tall Building Database of the CTBUH

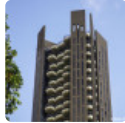
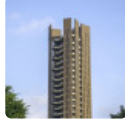


This PDF was downloaded from The Skyscraper Center on 2020/04/04 UTC
For the most up to date version, please visit <https://skyscrapercenter.com>

EDEN



Click an image to view larger version.



Figures

Height: Architectural	104.5 m / 343 ft
Height: Occupied	88.8 m / 291 ft
Height: To Tip	104.5 m / 343 ft
Floors Above Ground	26
Floors Below Ground	1
# of Elevators	3
Tower GFA	6,521 m ² / 70,191 ft ²
Development GFA	3,100 m ² / 33,368 ft ²
# of Apartments	20
# of Parking Spaces	41

Facts

Official Name	EDEN
Structure Type	Building
Status	COM
Country	Singapore
City	Singapore
Street Address & Map	2 Draycott Park
Postal Code	259386
Building Function	residential
Structural Material	concrete
Energy Label	Green Mark Platinum
Completion	2019
Official Website	EDEN

Companies Involved

Owner/Developer	Swire Properties Limited ; Celestial Fortune Pte. Ltd.
Architect	
• Design	Heatherwick Studio
• Architect of Record	RSP Architects Planners & Engineers
Structural Engineer	
• Engineer of Record	RSP Architects Planners & Engineers
MEP Engineer	
• Engineer of Record	RSP Architects Planners & Engineers
Main Contractor	Unison Construction Pte. Ltd.
Other Consultant	
• Façade	Meinhardt
• Interiors	Ensemble Pte Ltd. ; Heatherwick Studio
• Landscape	Coen Design International
• Lighting	LightBoxLighting
• Quantity Surveyor	Rider Levett Bucknall

CTBUH Awards

[Best Tall Building 100-199 meters 2020 Award of Excellence](#)

CTBUH Awards 2020

To submit more information or donate images for this project, please use our [submission portal](#).