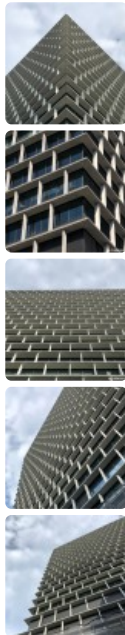


This PDF was downloaded from The Skyscraper Center on 2019/11/15 UTC
For the most up to date version, please visit <https://skyscrapercenter.com>

Kanda Nishikicho 2-chome Project



Click an image to view larger version.



Figures

Height: Architectural	120.9 m / 396 ft
Height: Occupied	104.6 m / 343 ft
Floors Above Ground	21
Floors Below Ground	1
Tower GFA	85,352 m ² / 918,721 ft ²

Facts

Official Name	Kanda Nishikicho 2-chome Project
Structure Type	Building
Status	Architecturally Topped Out
Country	Japan
City	Tokyo
Street Address & Map	Kanda Nishikicho 2-chome, Chiyoda-ku
Building Function	office
Structural Material	steel
Construction Start	2017
Completion	2020

Companies Involved

Owner/Developer	Sumitomo Realty & Development Co., Ltd.
Architect	
• Design	NIKKEN SEKKEI LTD
Main Contractor	Obayashi Corporation

To submit more information or donate images for this project, please use our [submission portal](#).