

Shum Yip Upperhills Tower 1

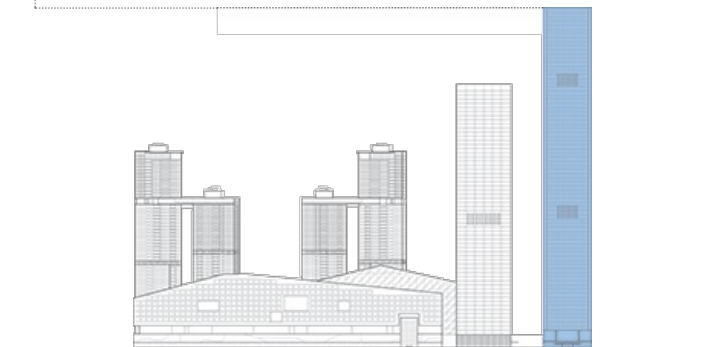


Click an image to view larger version.



Height: To Tip
388.1 m / 1,273 ft
Height: Architectural
388.1 m / 1,273 ft

Floors Above Ground
80



Facts

Official Name	Shum Yip Upperhills Tower 1
Name of Complex	Shum Yip Upperhills
Structure Type	Building
Status	UCT
Country	China
City	Shenzhen
Street Address & Map	Huanggang Road
Building Function	hotel / office
Structural Material	composite <ul style="list-style-type: none"> Core: Reinforced Concrete Columns: Concrete Filled Steel Floor Spanning: Steel

Proposed	2011
Construction Start	2014
Completion	2020
Official Website	Sum Yip Upperhills

Companies Involved

Developer	Shum Yip Land Company Limited
Architect	<ul style="list-style-type: none"> Design: Skidmore, Owings & Merrill LLP Architect of Record: CAPOL
Structural Engineer	<ul style="list-style-type: none"> Design: Skidmore, Owings & Merrill LLP
MEP Engineer	<ul style="list-style-type: none"> Design: Skidmore, Owings & Merrill LLP
Main Contractor	China State Construction Engineering Corporation
Other Consultant	<ul style="list-style-type: none"> Civil: Skidmore, Owings & Merrill LLP Lighting: Speirs and Major Traffic: MVA Transportation, Planning & Management Consultants
Material Supplier	<ul style="list-style-type: none"> Paint/Coating: Jotun

About Shum Yip Upperhills Tower 1

Located just north of Shenzhen's main central business district, Shum Yip Upperhills Tower 1 is the tallest building within a large complex of six towers and a series of low-rise buildings surrounding an elevated pedestrian space linking two large parks directly to the east and west. Shum Yip Upperhills Tower 1 was from the onset designed as a pair of towers, drawing inspiration through the power of having two buildings rather than one in order to reinforce the landmark status of the highly visible project.

Designed as a columnless building with an entirely flexible interior, Shum Yip Upperhills Tower 1 was framed as a composite structure with a reinforced concrete core and two very large steel super columns on each edge of the tower with steel floorplates strung between them. This is in contrast to [Tower 2](#), which was also framed with steel floorplates and a reinforced concrete core, but has a grid of hollow steel box columns making up the perimeter structure.

The façade is made up of custom designed glass modules with individual glass panes spanning 3 meters wide by 3.5 meters high, essentially the dimensions of a single office and about as large as single glass panes could be in a high-rise application at the time of design. This allows for floor to ceiling windows to maximize views while creating the illusion of nothing between the occupants and the outdoors.

Shum Yip Upperhills Tower 1 is functionally split between office and hotel uses with the hotel's event spaces positioned in a separate structure beside the tower. Known as the ballroom pavilion, it was designed around an outdoor terrace at the center of the structure providing an outdoor function space overlooking the neighboring Beacon Hill Park to the east and doubles as the hotel's main entrance.

The city of Shenzhen put a strong emphasis on the interaction of the complex with pedestrians due to the location between Beacon Hill and

Lotus Hill Parks. The city sought to seize the opportunity to establish a linkage between the green spaces when the complex was proposed for what was once an industrial park. As such, the project creates a direct passage through the block linked by elevated bridges crossing the arterial roads which flank the site to the east and west. The unique public space created ensures Shum Yip Upperhills Tower 1 and the greater complex will be an important part of the local cityscape for years to come.

Videos

CTBUH Video Interview – Yan Meng

18 Oct 2016 – Yan Meng, Urbanus

Tall Buildings and Context: Appropriate High Rise Vernaculars

18 Oct 2016 – Timothy Johnson, NBBJ; Yansong Ma, MAD Architects; Winy Maas, MVRDV; Yan Meng, Urbanus; Patrik Schumacher, Zaha Hadid Architects; Jerry Yin, SOHO China Co. Ltd.

CTBUH Video Interview – Jovi Chu

17 Oct 2016 – Jovi Chu, Shum Yip Land Company Limited

[More Videos](#) →

Research Papers

Do We Need 700 Meter High-Rise Buildings?

17 Oct 2016 – Cities to Megacities: Shaping Dense Vertical Urbanism

Shenzhen Shum-Yip Tower One: A Case Study – A-E Integration – A Broad New Vision

17 Oct 2016 – Cities to Megacities: Shaping Dense Vertical Urbanism

Shaping the Environment of the Urban Complex from the Urban Point of View

16 Sep 2014 – CTBUH 2014 Shanghai Conference Proceedings

To submit more information or donate images for this project, please use our [submission portal](#).