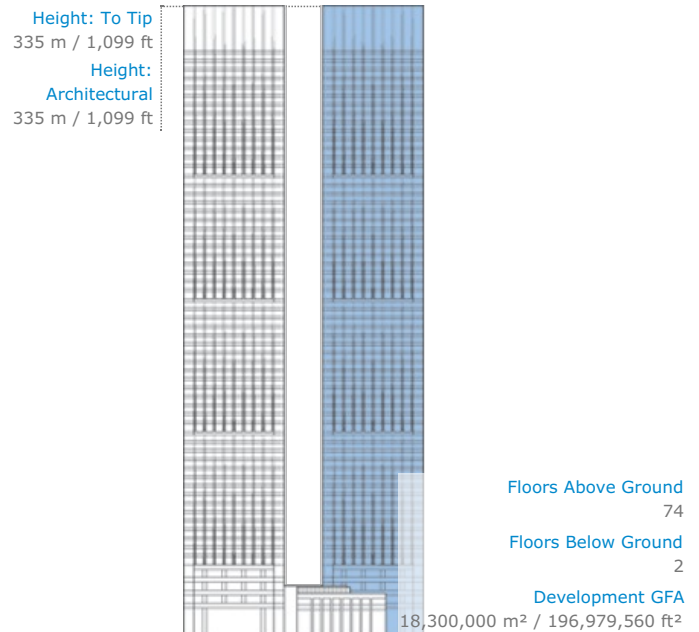


Twin Towers Guiyang, West Tower



Click an image to view larger version.



Facts

| | |
|----------------------|---|
| Official Name | Twin Towers Guiyang, West Tower |
| Name of Complex | Huaguoyuan |
| Other Names | Huaguoyuan West Tower, Huaguoyuan Tower 2 |
| Structure Type | Building |
| Status | COM |
| Country | China |
| City | Guiyang |
| Street Address & Map | Wulichong Road |
| Building Function | hotel / office |
| Structural Material | composite <ul style="list-style-type: none"> Core: Reinforced Concrete Columns: Concrete Encased Steel Floor Spanning: Steel |
| Construction Start | 2012 |
| Completion | 2020 |

Companies Involved

| | |
|-----------------------|--|
| Architect | |
| • Design | LWK & Partners |
| • Architect of Record | China Huaxi Engineering Design & Construction Ltd. |
| Structural Engineer | |
| • Design | Arup |
| MEP Engineer | |
| • Design | Arup |
| Main Contractor | China State Construction Engineering Corporation |
| Other Consultant | |
| • Façade | SuP Ingenieure GmbH |
| • Interiors | Benoy |
| Material Supplier | |
| • Elevator | Schindler |

About Twin Towers Guiyang, West Tower

Located in the heartland city of Guiyang, this twin-tower development seeks to enrich the city skyline with a simple modern presence that emphasizes symmetry and balance. The towers are located near the Guiyang commercial street, which is a main thoroughfare through the city, and lies south of an ecological wetland park. The façade of the twin towers reflects simplicity and uniformity, enriched with an assortment of explicit details. The 1.8 meter-wide glass panes cover the towers without visible spandrels, forming a streamlined appearance that unifies the complex.

The two towers are offset from a large six story retail podium which then extends an additional 5 floors underground. The towers were constructed simultaneously and rose from a deep excavation of the entire site. Both towers are constructed with composite frames composed of a reinforced concrete core and exterior columns of steel fully encased in concrete. The towers are square in plan with chamfered corners and are framed with 9 structural columns on each side of the perimeter which reduces to 5 large columns at the base through the use of a load transfer of diagonal columns spanning through four floors just above the main lobbies. The perimeter structural grid remains the same for the full remaining height of the east tower, however on the west tower, this grid reduces to 7 columns on each side for the uppermost floors where a hotel is located above office space.

When the towers were completed, they became Guiyang's first supertall buildings as well as the centerpiece of an emerging cluster of new tall buildings on the western side of the city.

CTBUH Initiatives

Top Company Rankings: The World's 100 Tallest Buildings

13 Oct 2016 – CTBUH Research

To submit more information or donate images for this project, please use our [submission portal](#).